



# DRILLING LOG



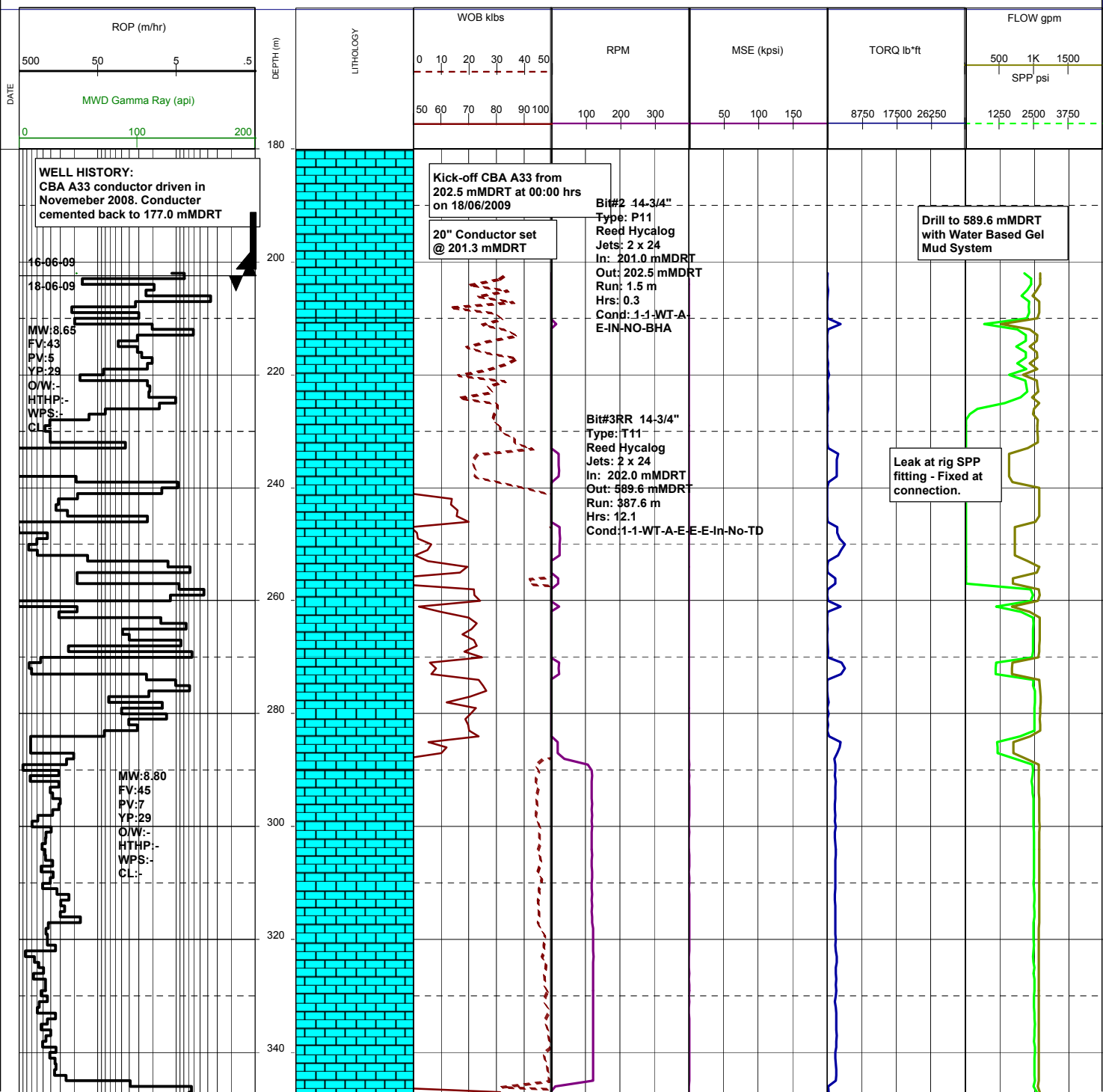
FROM : (m) 180 TO : (m) 2600 SCALE : 1/1000

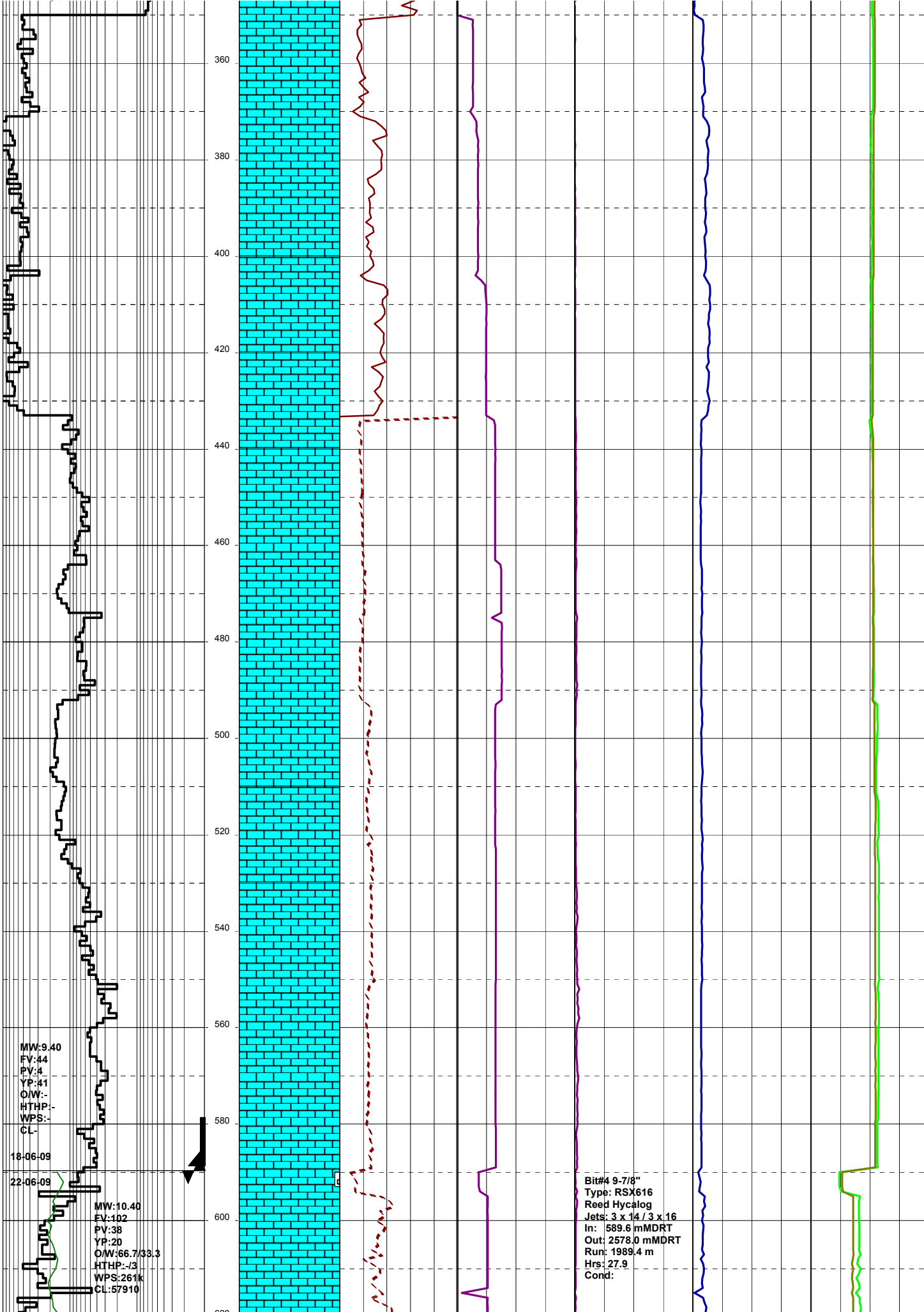
Well Name : Cobia A33  
Company : ESSO AUSTRALIA LTD

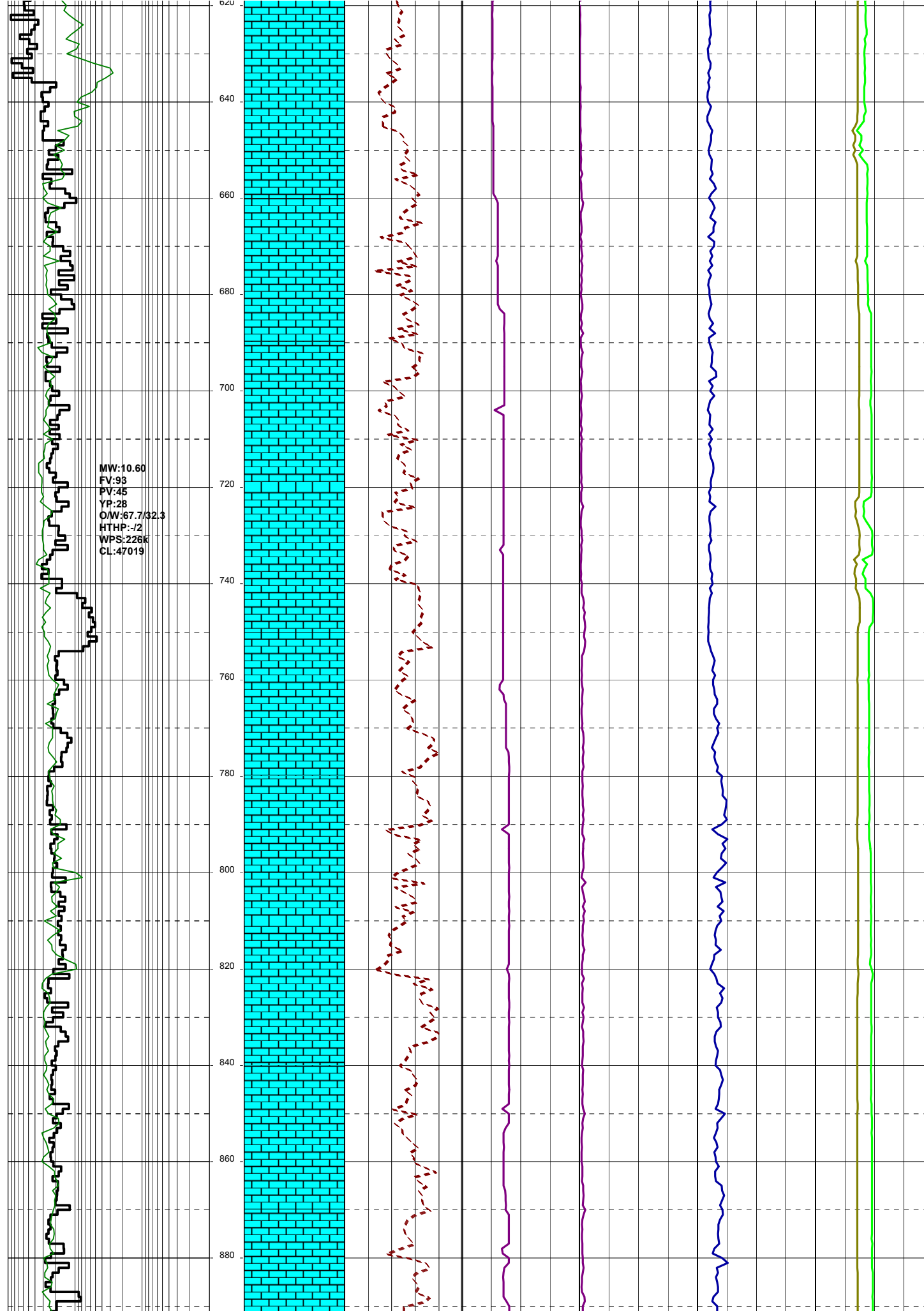
Country : AUSTRALIA

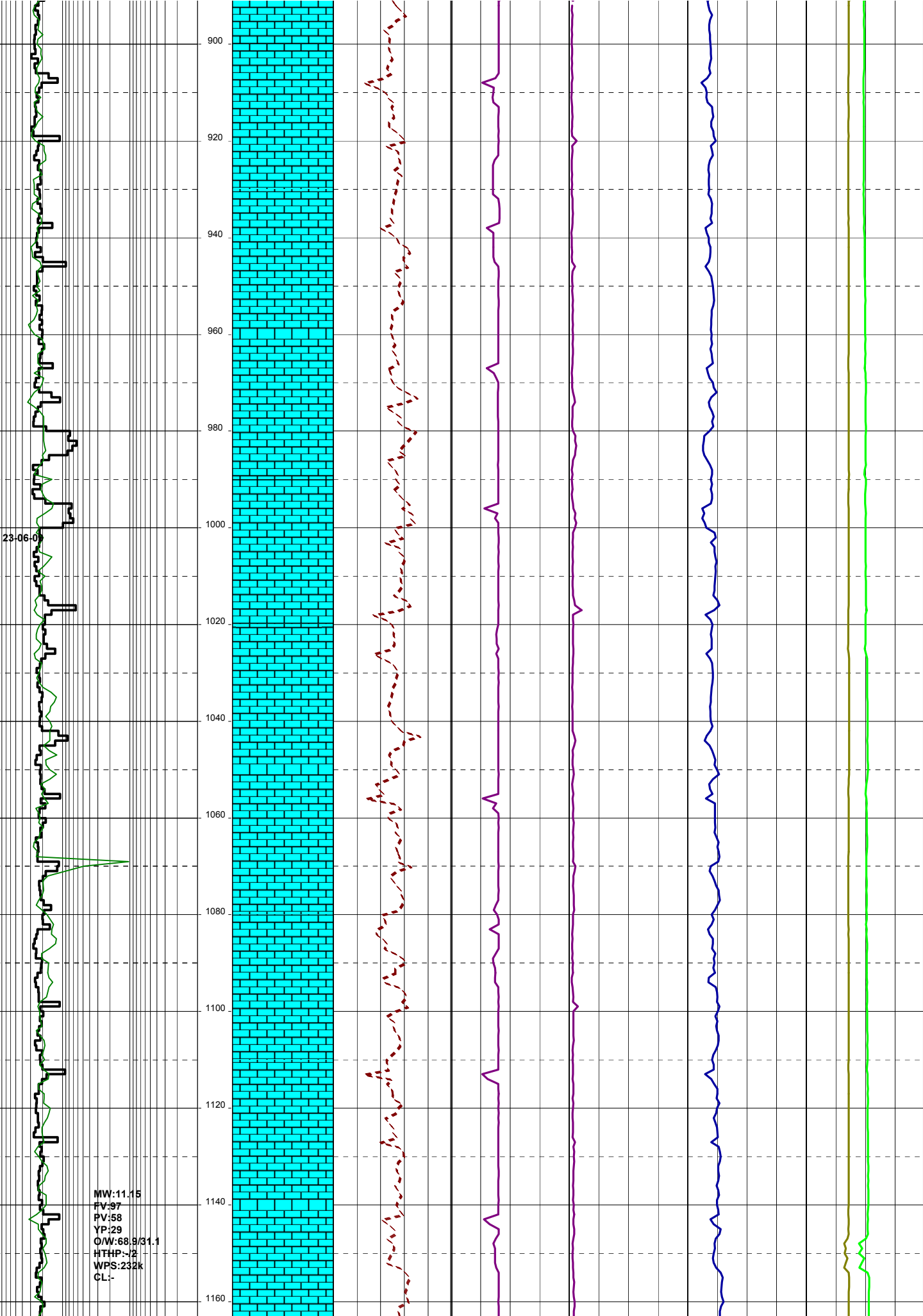
RT-MSL (m) : 41.0  
RT-SEABED (m) : 120.0

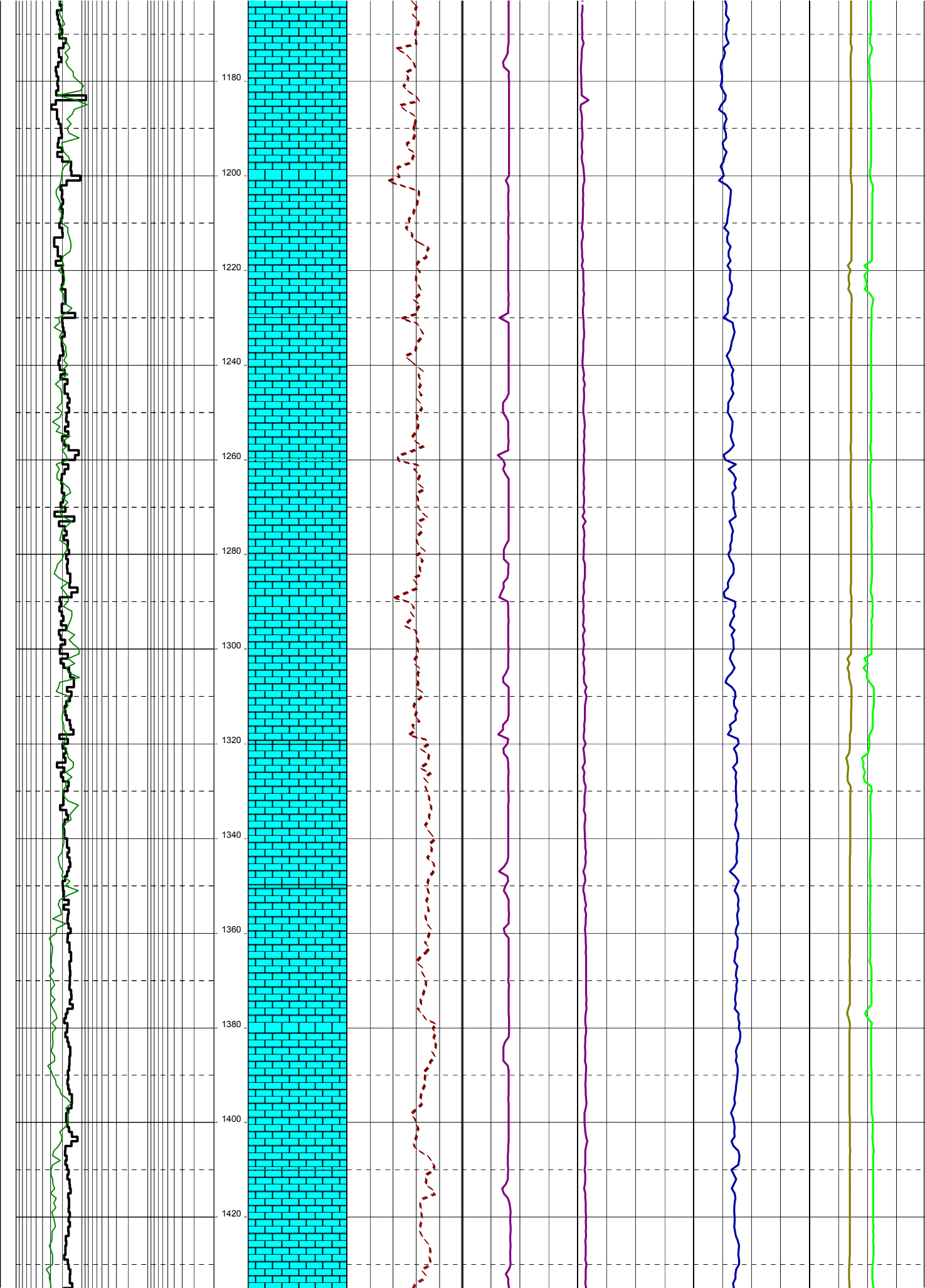
Generated by geoNEXT Package





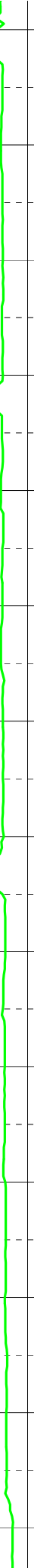
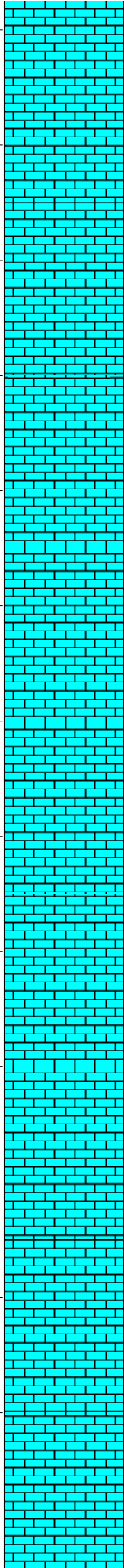


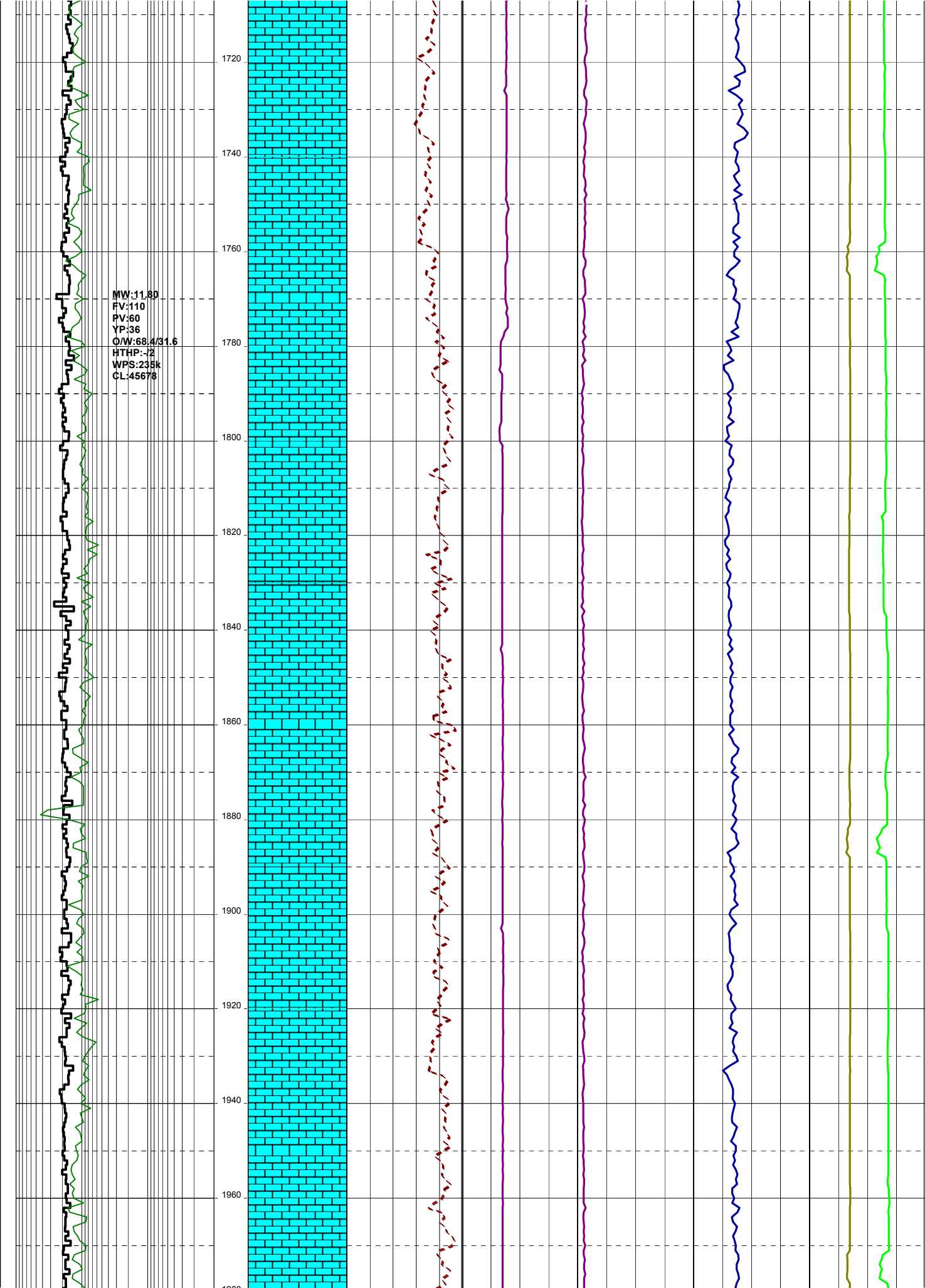




MW:11.80  
FV:104  
PV:57  
YP:35  
O/W:68.4/31.6  
HTHP:-  
WPS:240k  
CL:186967

1440  
1460  
1480  
1500  
1520  
1540  
1560  
1580  
1600  
1620  
1640  
1660  
1680  
1700

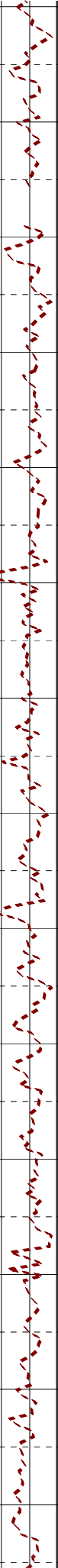
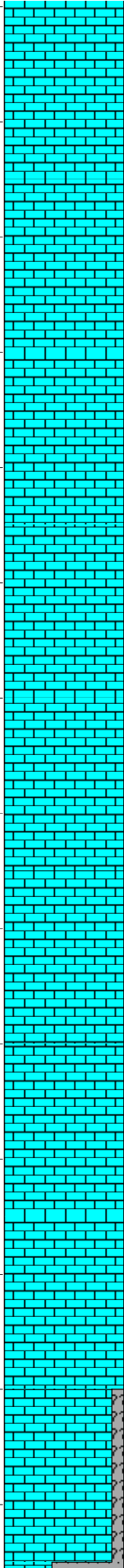




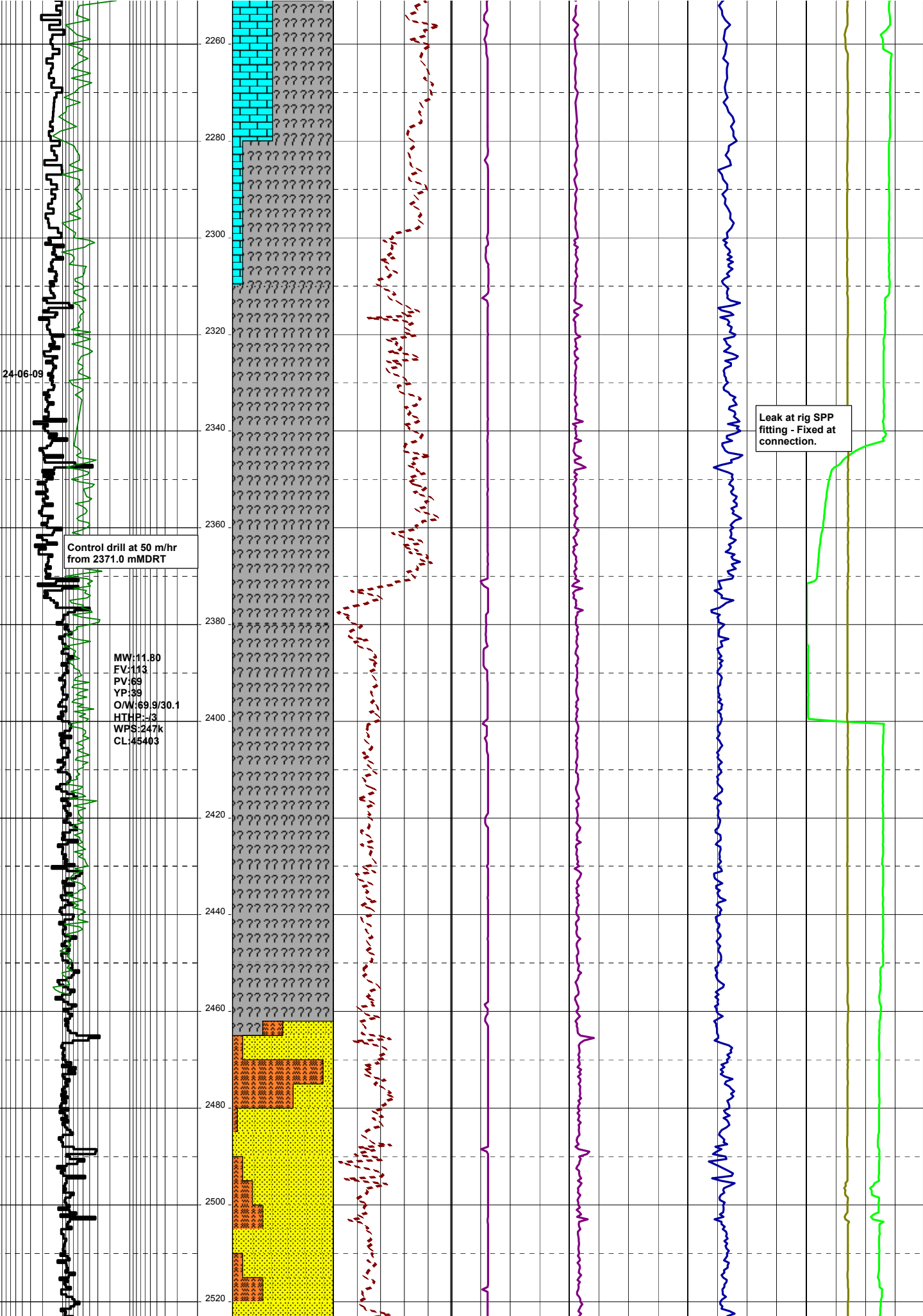
SYSTEM CRASH: REBOOT  
DRILL DATA LOST FROM  
2011.0mMDRT TO 2018.0  
mMDRT

MW:11.80  
FV:116  
PV:63  
YP:40  
O/W:70.5/29.5  
HTHP:-2  
WPS:248k  
CL:44244

1980  
2000  
2020  
2040  
2060  
2080  
2100  
2120  
2140  
2160  
2180  
2200  
2220  
2240



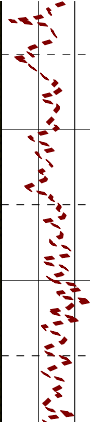
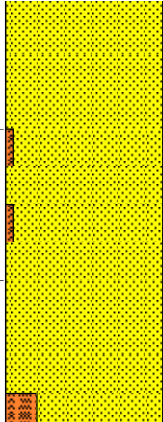




2540  
2560  
2580  
2600

MW:11.80  
FV:112  
PV:63  
YP:33  
O/W:70.5/29.5  
HTHP:-2  
WPS:256k  
CL:46484

2540  
2560  
2580  
2600



Cobia A33 reached TD of  
2579.00mMDRT (2502.15mTVDRT)  
(-2461.15mTVSS) at 07:30 hrs  
on 24/06/2009

